

Did you Know...

- The wood of a Flowering Dogwood can be used to make tool handles, charcoal and pulleys?
- The Flowering Dogwood can improve soil due to its leaves that fall to the ground in the fall?
- There is wildlife that eats the seeds due to their high calcium and fat contents.

Are the seeds of the Flowering Dogwood poisonous to humans?

- a. Yes
- b. No



References

www.plants.udsu.gov

www.fcps.edu



I 
TREES

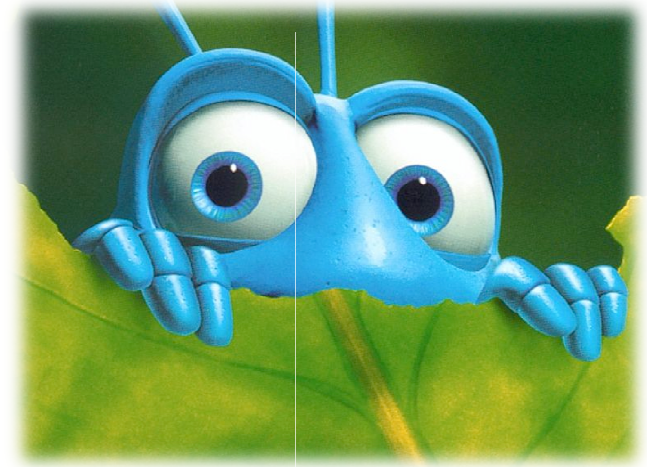


Flowering Dogwood

Cornus Florida

Pests and Parasites

There are a few pests of the Flowering Dogwood. They are the dogwood borers, aphids, scale insects and caterpillars. The parasite that is known to cause trouble to the tree is Honey Mushroom. These pests and parasite has lead to the tree being endangered in Maine, exploitably vulnerable in New York and threatened in Vermont.



Facts about the Flowering Dogwood

The Flowering Dogwood, *Cornus Florida*, is from the Dogwood family and is a multi-branch shrub/ small tree. It reaches maxim height of 30 ft and it has a bark, on mature trees, that seems to resemble an alligator due to it being broken into small squares. The leaves of a Flowering Dogwood are opposite, rarely can be alternate, and in early spring, the flowers bloom into a beautiful yellow color with 4 large white bracts surrounding them. The flowers appear between the months of March and June, coming with or even before the leaves. The fruit that comes off of the tree is a berry- like fruit that is yellow to red. The fruit ripens around September and October. If you

want to the Flowering Dogwood, there are certain places in the US in which you must go to see it. It's native to northeastern and southeastern United States. It is as north as Maine, as south as Florida and as west as Texas, Missouri, Illinois and Southern Michigan. In the fall, the beautiful leaves turn to a reddish-purple color.

