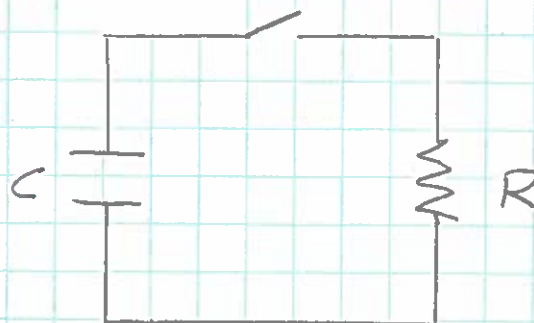
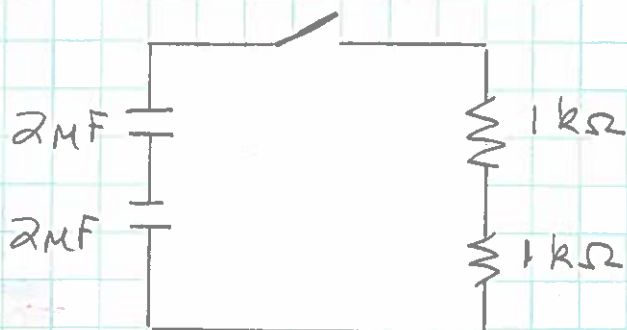


Combine Capacitors
and Resistors



$$\frac{1}{C} = \frac{1}{2\text{MF}} + \frac{1}{2\text{MF}}$$

$$C = 1\text{MF}$$

$$R = 1\text{k}\Omega + 1\text{k}\Omega$$

$$= 2\text{k}\Omega$$

$$\therefore \tau = RC = \underline{0.002\text{s}} = \underline{2.0\text{ms}}$$